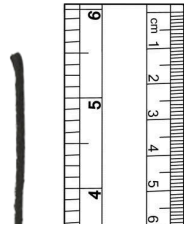




Check Your Home's Pipe Size

01

Grab a string that measures 6" (152mm) long or print out this [printable ruler](#) and cut it out.



02

Locate your main water supply pipe (usually found in the basement, utility area, garage, etc.). It will have a shut off valve that shuts off all the water to your home.

03

Make sure any insulation is stripped away enough so that you can wrap the string/ruler around the actual pipe.

04

Measure how long the string/ruler it takes to go around the pipe once. Use this length to determine the pipe diameter based on the pipe material in the compatibility guide on plumbuddy.co.

